

## Install TempTale Temperature Monitor Software

Acronym List.....	1
Review History.....	1
Version History .....	1
TempTale Monitor Illustration.....	2
Install TempTale Manager Desktop v8.3 .....	2
1. Installing using Software Centre .....	2
Packing & Temperature Monitoring of Vaccine.....	4
1. Storing vaccine outside of fridge in a vaccine bag or cooler .....	4
Reprogram TempTale Data Logger.....	4
1. Reprogram TempTale Ultra Temperature Monitor/Data Logger Device .....	4

### Acronym List

eHS	eHealth Saskatchewan
SHA	Saskatchewan Health Authority
TTMD	TempTale Manager Desktop

### Review History

Reviewed by	Review Date	Reason
<i>KM TL - Jewsbury</i>	<i>March 15, 2021</i>	<i>Vaccine Clinic Support</i>

### Version History

Version	Implemented by	Revision Date	Approval	Reason
<i>1.0</i>	<i>Hayden Matchett</i>	<i>3/15/2021</i>	<i>KM TL</i>	<i>Vaccine Clinic Support</i>
<i>2.0</i>	<i>KM TL - Jewsbury</i>	<i>March 15, 2021</i>		<i>Vaccine Clinic Support</i>

## TempTale Monitor Illustration

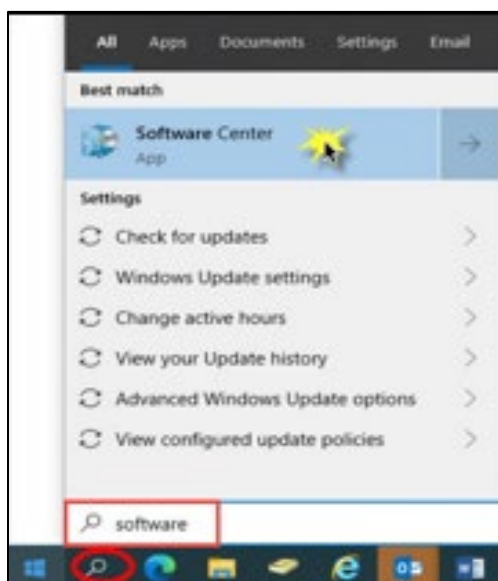


**TempTale Ultra Temperature Monitor**

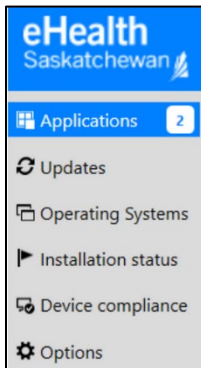
## Install TempTale Manager Desktop v8.3

### 1. Installing using Software Centre

- a. On the Windows search bar (bottom left corner of the screen), type **Software** and open the **Software Centre** application.



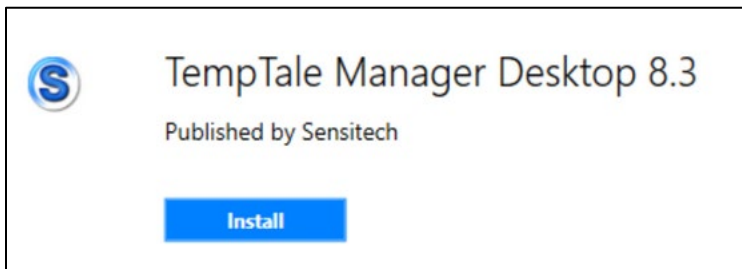
- b. Once the Software Centre application opens, click the **Applications** tab on the left hand side.



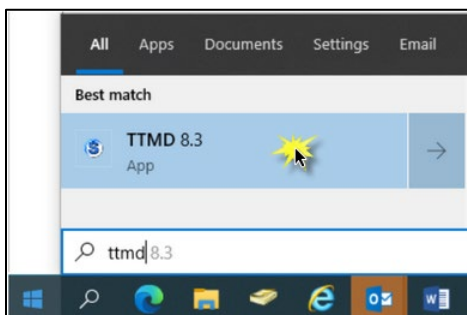
- c. Click on the **TempTale Manager Desktop 8.3** application.



- d. Click **Install**.



- e. Once installed, search in the Windows search bar again for **TTMD 8.3** to open application.



## Packing & Temperature Monitoring of Vaccine

1. Storing vaccine outside of fridge in a vaccine bag or cooler
  - a. Work Standard is located: <https://www.saskhealthauthority.ca/news/service-alerts-emergency-events/covid-19/vaccine-info-health-care-providers/Documents/General/CV-19-WS0057-Packing-and-Temperature-Monitoring-of-Vaccine.pdf>

Work Standard includes:

- Escalation process if **temperature is out of recommended range**.
- **Await direction** to determine if vaccine should be discarded.

## Reprogram TempTale Data Logger

1. Reprogram TempTale Ultra Temperature Monitor/Data Logger Device
  - a. Work Standard is located: [https://sharepoint.ehealthsask.ca/sites/MOH\\_gen/IPC](https://sharepoint.ehealthsask.ca/sites/MOH_gen/IPC)  
(Access to SharePoint site is required)

[Return to first page](#)