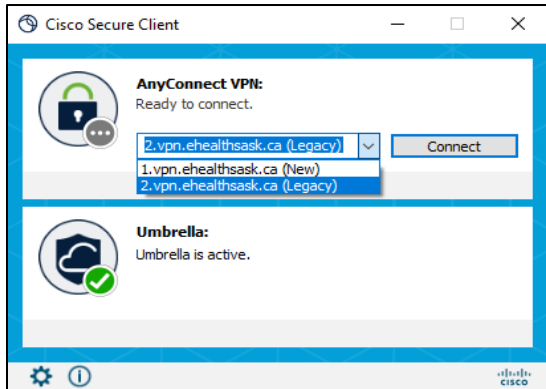
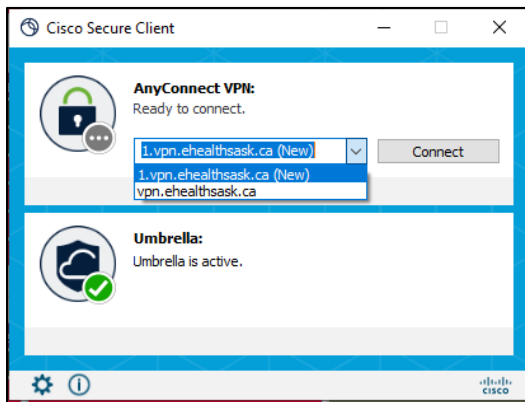


On first connect (*post VPN migration*) the customer can connect to either VPN connection string (*e.g., 1 or 2*).



Once connected, the profile will overwrite the existing VPN connection string information, however it will also display the last connected vpn URL string.

The customer will be required to select from the drop-down list and connect to **vpn.ehealthsassask.ca**.



Once connected to the **vpn.ehealthsassask.ca** connection string, the previous connection string will no longer show in the list.

